

Uninstalling MQ 9.0 components in Windows (example Telemetry)

IBM Techdoc: 7050128

<http://www.ibm.com/support/docview.wss?uid=swg27050128>

Date last updated: 31-Jul-2017

Angel Rivera - rivera@us.ibm.com
IBM MQ Support

+++ Objective +++

The objective of this techdoc is to show all the steps to uninstall one component for MQ 9.0 on Windows.

In order to provide concrete steps, the following component will be uninstalled.

- MQ Telemetry Service

This is Techdoc number 3 out of 3 techdocs on the matter.

The other techdocs are:

<http://www.ibm.com/support/docview.wss?uid=swg27050058>

Installing MQ 9.0 in Windows, using only the defaults

<http://www.ibm.com/support/docview.wss?uid=swg27050059>

Installing MQ 9.0 in Windows, specifying additional components (Telemetry, AMS, MFT)

+++++
+++ Chapter 1: Stopping the queue manager
+++++

OK, you used the related Techdocs mentioned earlier to install MQ components in your Windows box.

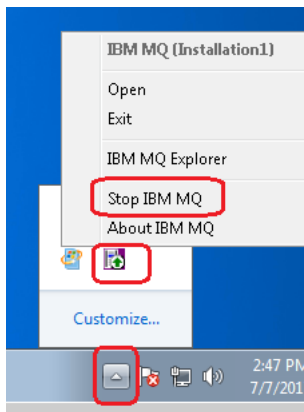
Now, you want to uninstall components for MQ.

You need to be a Windows Administrator.

Before installing the additional components of Telemetry, AMS and MFT, you must stop all the MQ activity in the box:

- stop the queue managers
- exit from the MQ Explorer
- stop the MQ service (see below)

To stop the MQ service, scroll to the bottom right corner, locate the icon for MQ, right-click and select “Stop IBM MQ”.



Now you are ready to proceed.

+++++
+++ Chapter 2: Invoking the MQ installer (setup.exe)
+++++

You need to interact with the MQ installer (setup.exe) that was used during the original installation.
The installer will detect what component have been installed, and will allow you to select additional components to install.

Open the folder where you have unzipped the MQ 9.0 code.
In the previous techdoc, the directory that was used was:

C:\downloads\MQ-9000\IBM_MQ_9.0.0.0_WINDOWS\MQServer

Double click on "Setup.exe"

You will see: Welcome to the IBM MQ Launchpad

As in the previous techdoc, select the "IBM MQ Installation" button on the left side.
Notice that a button in the middle will now appear:
Launch IBM MQ Installer

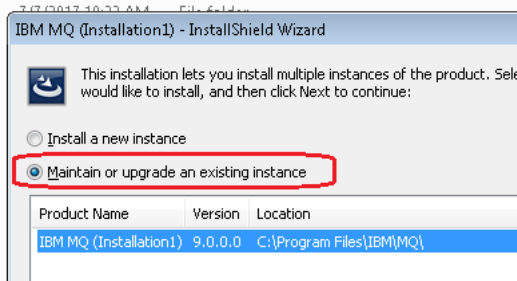
Click on the button.

A new window will appear:

We want to work on an existing installation (or instance).

We need to explicitly choose the 2nd button:

(*) Maintain or upgrade an existing instance



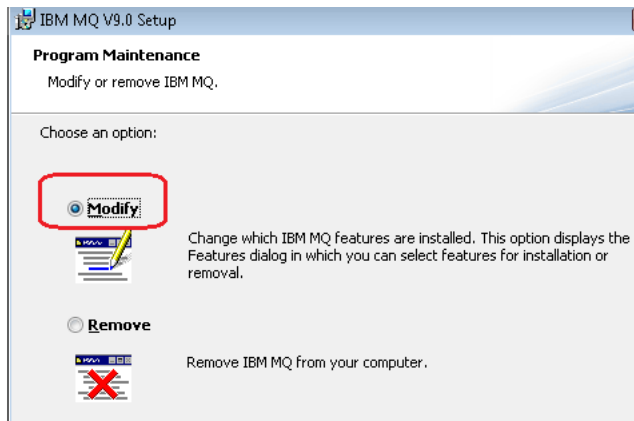
Notice that the information in the window indicates:

Product Name	Version	Location
IBM MQ (Installation1)	9.0.0.0	C:\Program Files\IBM\MQ

Click Next.

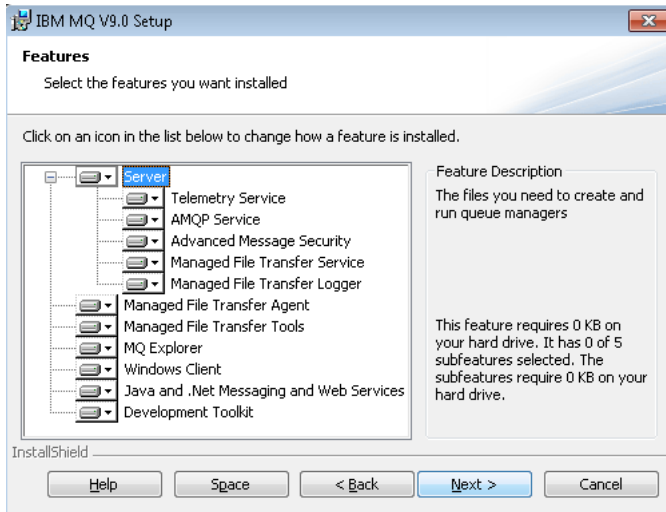
Accept the default:

(*) Modify

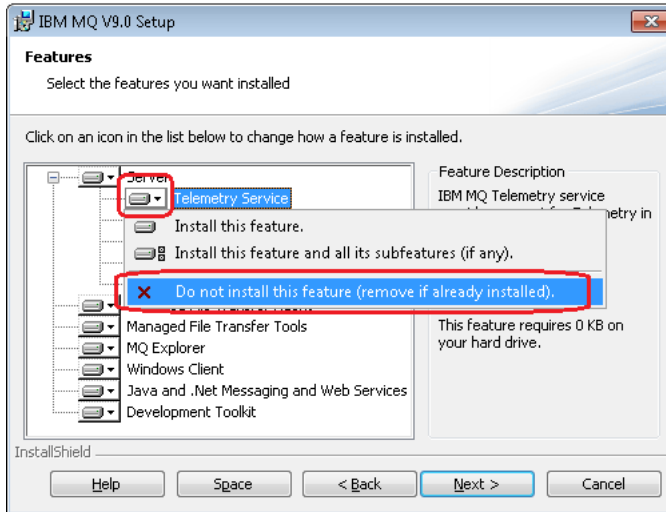


Click Next

You will see all the components that have been installed:



Select the desired component to uninstall.
In this case, the component is:
Telemetry Service

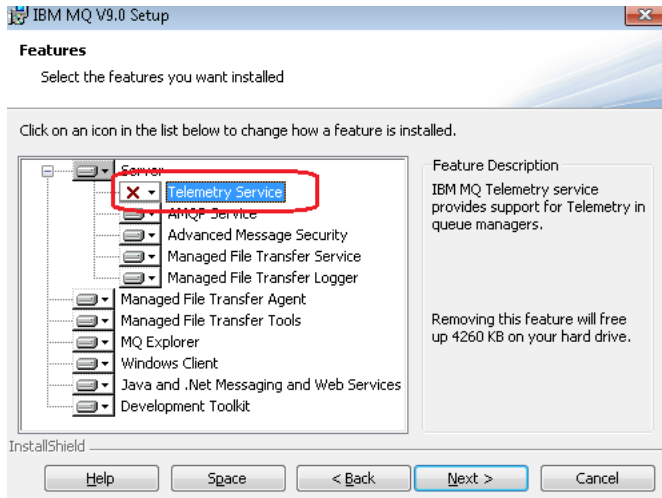


You need to click on the arrow pointing downward, on the left of the component name.

Then select the bottom action:

Do not install this feature (remove if already installed).

Notice that the icon for the selected component changes.
The icon to the left of the name of the component now shows a big red X.

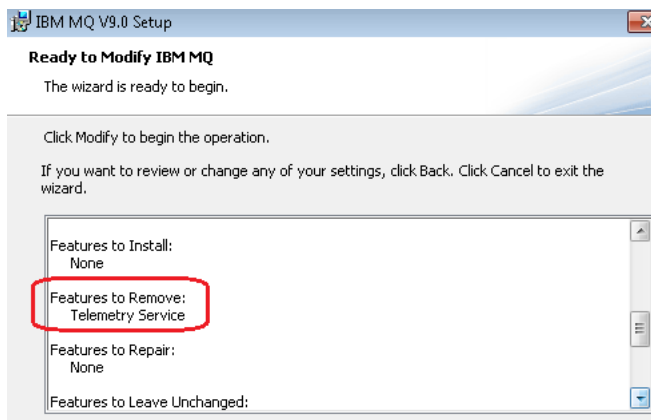


Click Next

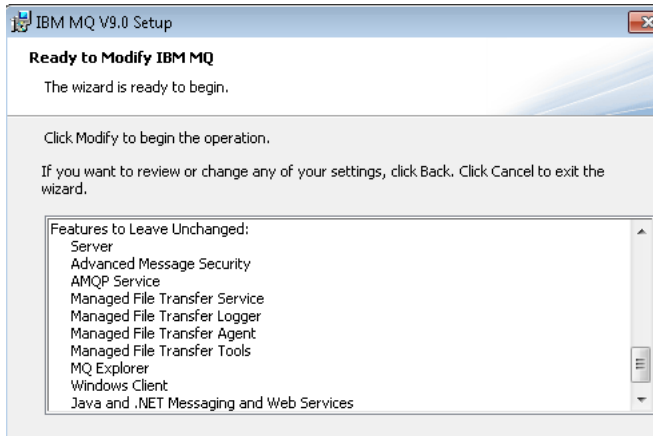
You will see the dialog “Ready to Modify IBM MQ”

Notice that there is a section with the name of the component to uninstall:

Features to Remove:
Telemetry Service

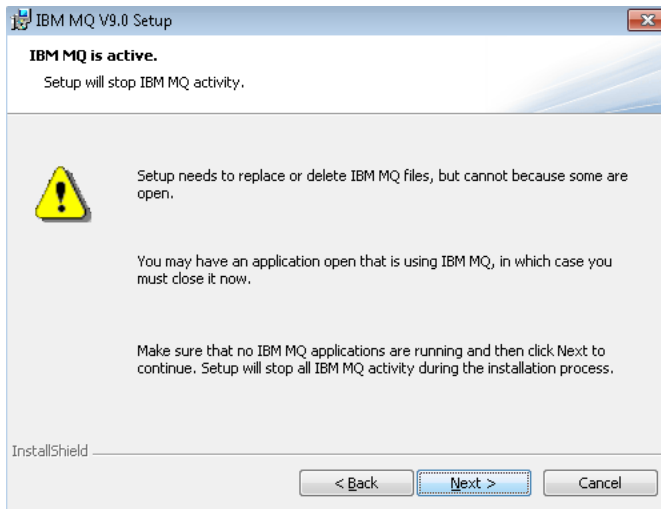


Scroll down to see the rest of the contents:



Click Modify.

You may see the following warning:



It says:

Setup needs to replace or delete IBM MQ files, but cannot because some are open. You may have an application open that is using IBM MQ, in which case you must close it now.

Make sure that no IBM MQ applications are running and then click Next to continue. Setup will stop all IBM MQ activity during the installation process.

Click Next.

The uninstallation activity will take a while. Then click Finish to exit the dialogs.

One way to verify that the MQ Telemetry Service is no longer installed is by issuing the following command:

```
C:\> dspmqver -p 512
```

```
AMQ8250: The 64-bit IBM MQ Telemetry component is not installed.
```

To find out what are the options for dspmqver, you can issue the following command.

Note, only the description for the “-p” parameter will be shown.

Notice that the following value is for Telemetry (MQXR is an alias for Telemetry).

```
512=MQXR
```

```
dspmqver -h
```

```
Usage: dspmqver [[-a] [-b] [-p Components] [-f Fields] [-v]] | -i]
```

-p Components, either one or a sum of the following:

```
1=Server or client, 2=Java, 4=JMS, 16=WCF,  
32=XMS, 64=GSKit, 128=AMS, 256=AMQP, 512=MQXR,  
1024=Other
```

Another way is to start a queue manager.

In the Techdoc number 2, the queue manager indicated that it was capable to support Telemetry:

```
display qmgr XRCAP
```

```
AMQ8408: Display Queue Manager details.
```

```
QMNAME(QM1) XRCAP(YES)
```

But after the uninstallation, the queue manager detects during startup that Telemetry is no longer installed, thus, it shows that it is no longer capable:

```
display qmgr XRCAP
```

```
AMQ8408: Display Queue Manager details.
```

```
QMNAME(QM1) XRCAP(NO)
```

```
+++ end +++
```